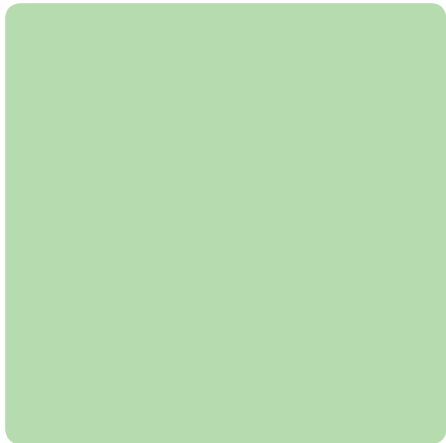
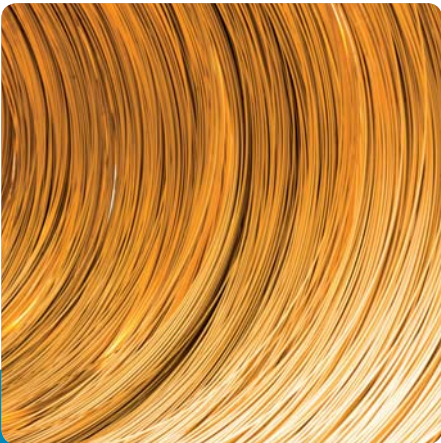


The tube engineers.



+ The tube engineers.

Do you think of experience, competence, a passion for innovation and quality, integrity, diligence and dependability when you hear the word “engineers”? If so, you know what you can expect from us. Welcome to the “tube engineers”!

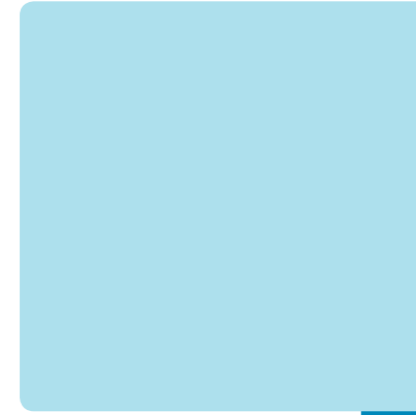
Who we are.

MGI is an owner-operated, medium-sized enterprise. We are specialists for brass and copper tubes, offering solutions for customers imposing the toughest demands on quality.

We are the quality leaders in the field of seamless drawn precision tubes (Quality Tubes) – thanks to over a century of experience in tube-drawing and the ambition of our staff to deliver perfection every time.

With this wealth of experience and our passion for quality and innovation, we also set standards when it comes to the further processing of tubes (Tube Solutions). The products and services we offer range from machined tube elements to complete assemblies.

But, as our customer, you can expect much more than that. We see ourselves as a provider of complete, customised solutions – offering everything from support of your product development activities to a vendor-managed inventory system. You decide how much solution you want.



Ecology & sustainability

play an essential role at our company. We focus on exemplary waste water treatment, saving energy and using renewable energies, resource-conserving packaging, and a supplier selection system that incorporates ecological criteria.

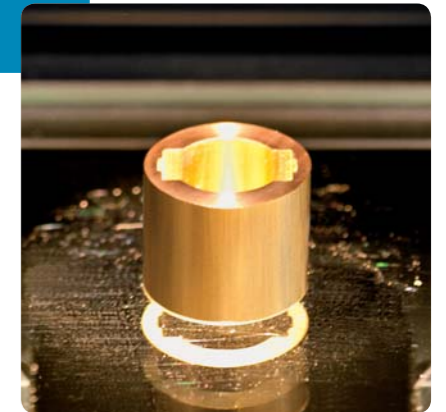
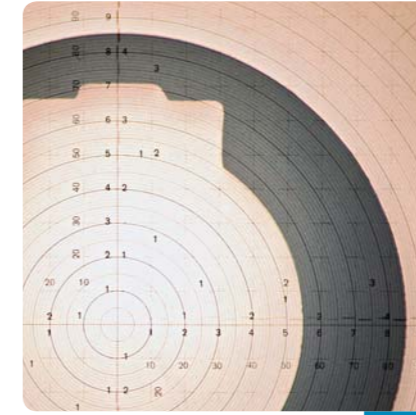
+ We live quality.

For us, quality means more than just product quality. We apply an all-embracing quality philosophy in order to be a top-class partner for you in every respect.



Quality control

Our products are subject to stringent quality control. Expert specialists carefully check every production batch – and every single component in the case of selected assemblies. The methods we use for this purpose include spectroscopy, grain size grading, hardness tests and – as the only company in the world – eccentricity measurements.



What we mean by quality.

Quality begins in the mind. Our staff are proud of being the quality leaders and are committed to further consolidating this position in their daily work.

For us, quality means that our customers are satisfied with our goods and services in every respect. And because numerous influencing factors play a role in this context, we operate with an extended quality concept that covers not only product quality, but also all relevant processes. That includes the selection of our suppliers, the constant improvement of our modern production and service processes, extremely careful product controls, the qualification of our employees and strategic, customer-oriented development of our offering.

Safeguarding this all-embracing quality calls for more than just ISO 9001:2008 certification – which we naturally have. That's why we developed the **MGI Business System**.

This system encompasses defined and documented processes in the fields of Supply Chain Management, Quality Management, Product Development and Employee Development.

As a customer, you stand to gain because the MGI Business System guarantees maximum product quality, compliance with delivery deadlines, perfect service and much more, making MGI a dependable, efficient and innovative partner.

+ Quality Tubes.

It was in 1906 that the tube drawing works of “Metallwerke Gustav Imhäuser” laid the foundations for Olpe’s internationally renowned tube industry. Today, the “tube engineers” from MGI are considered to be the world’s quality leaders in semi-finished tube products.

Why you should choose our tubes.

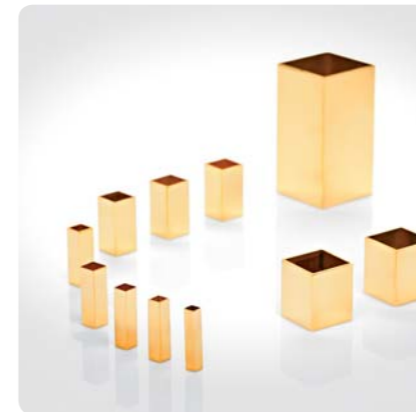
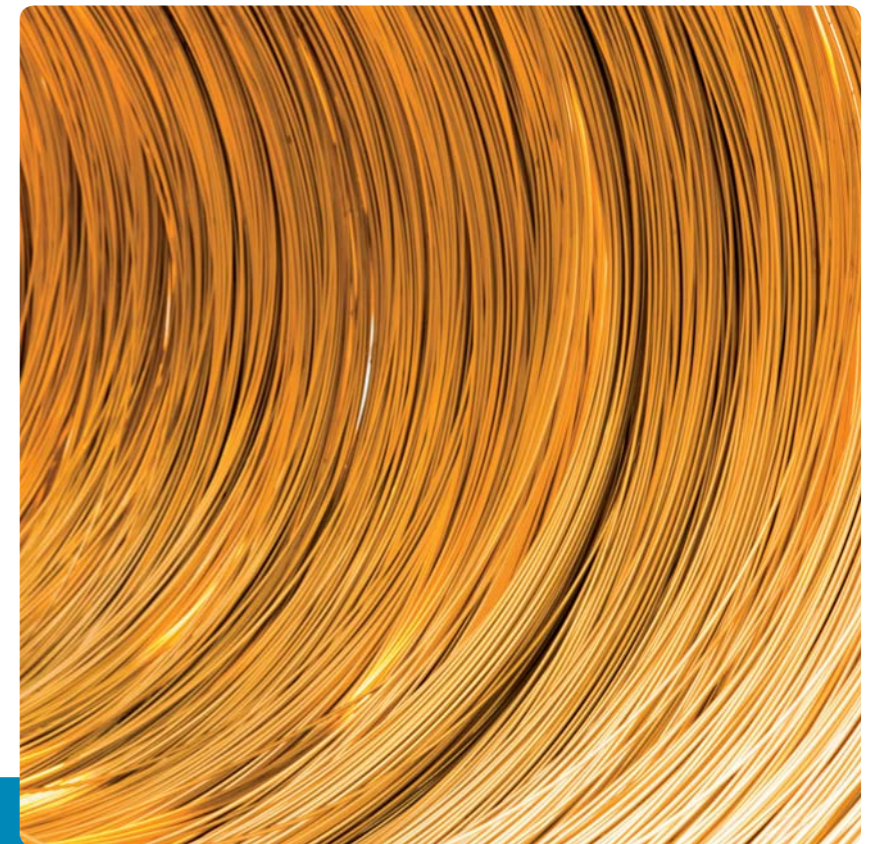
MGI specialises in seamless drawn precision tubes made of non-ferrous metals, particularly brass and copper.

We draw round and profiled quality tubes in dimensions from 0.8 to 65 mm in straight lengths and in coils. Provided it is technically feasible, our “tube engineers” will implement any individual requirements you may have.

Quality Tubes from MGI are characterised by consistent top quality. That means: perfect surface quality, maximum internal cleanness, minimum eccentricity and compliance with very narrow tolerances. This quality is guaranteed by the expertise of our tube-drawing staff, clean production processes and extremely careful quality control.

For us, however, an all-round solution means more than just perfect quality: for example, we finish our tubes in the way that best allows you to process them optimally. Depending on the requirements and the dimensions, we deliver tubes drawn in coils with coil weights of up to 40 kilograms. On request, we can also cut your tubes to the length you need.

For you, the customer, that means: top-quality semi-finished products for trouble-free further processing.



+ CW700R: TUNGUM®

Its extreme resistance to seawater and its atmosphere is just one of the many outstanding properties that make TUNGUM® the optimum material for numerous applications.



TUNGUM®

is a trade name for an aluminium-nickel-silicon brass having the designation CW700R in EN 12449.

What makes TUNGUM® so special.

Even under the toughest conditions, TUNGUM® proves to be far more durable and safer than conventional tube and pipe materials. After all, it possesses extraordinary chemical and physical properties, such as:

- + Extreme resistance to seawater
- + Excellent resistance to abrasive wear, cavitation and corrosion (including stress and crevice corrosion)
- + Outstanding low-temperature properties
- + Very good resistance to material fatigue, e.g. when exposed to pulsating pressures and vibrations
- + Non-magnetic, no sparking

Typical applications for TUNGUM® include offshore drilling rigs, special-purpose ships, offshore diving systems, high-pressure industrial gas storage and distribution systems, seawater applications in the navy, combat vehicle construction, maritime repair work, power station construction, aircraft construction, compressors, construction engineering, brake lines, oil- and water-cooling industry and transport systems.

We will be more than pleased to provide you with more detailed information and advice regarding the properties and possible applications of this still relatively unfamiliar alloy, which offers major potential in terms of greater economy and safety.



MGI

is the only company in the world with more than 20 years of experience in drawing TUNGUM® tubes.

+ Tube Solutions.

You can particularly benefit from our strengths as “tube engineers” when it comes to finishing and processing tubes. We offer the most diverse machining solutions, and can also develop and produce entire assemblies for you.

Why we are the right solution.

Experience, quality and a passion for innovation have made us a leading provider of solutions in the field of finishing and processing semi-finished tube products. Customers imposing the toughest demands put their faith in us. We can offer you a uniquely wide range of products and services from a single source, from the machining of individual tube elements, all the way to completely assembled, chromium-plated units. In top quality every time.

When realising demanding components, e.g. in the high-end sanitary fittings sector, our solutions start as early as the product development stage. We advise our customers during the design phase, in order to later guarantee maximum efficiency and practicability in production.

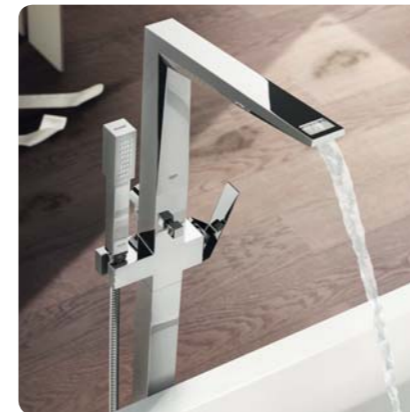
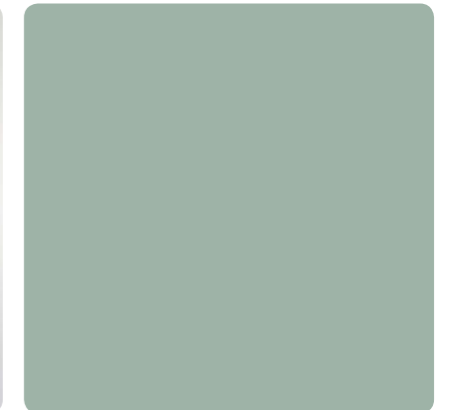
If you like, we can also handle packaging, warehousing and logistics services for you, all the way to a vendor-managed inventory system.

It's up to you to decide how much of our potential you want to exploit in the Tube Solutions sector – whatever the case, we can always offer the solution you want.



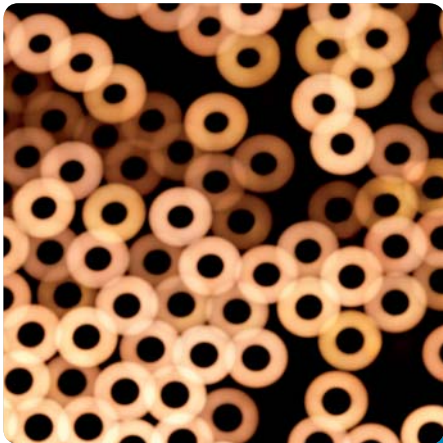
From a single source:

- + Bending/forming
- + CNC machining
- + Soldering/brazing
- + Polishing
- + Galvanic surface finishing



Lead-free since 1990

Incidentally, we have been producing lead-free brass fittings since the beginning of the 1990s, although the EU will only call for them from 2013 onwards.



MGI GmbH
Olper Hütte 7
D-57462 Olpe
Germany

Phone +49 2761 86-0
Fax +49 2761 86-111
www.mgi-olpe.de
info@mgi-olpe.de

Product photos on page 11 provided by:
© Hansgrohe AG, Schiltach, Germany
© Aloys F. Dornbracht GmbH & Co. KG,
Iserlohn, Germany
© GROHE Deutschland Vertriebs GmbH,
Porta Westfalica, Germany
Photography: Frank Rossbach, Cologne
Concept + Design: Weingartz', Cologne

